

2023

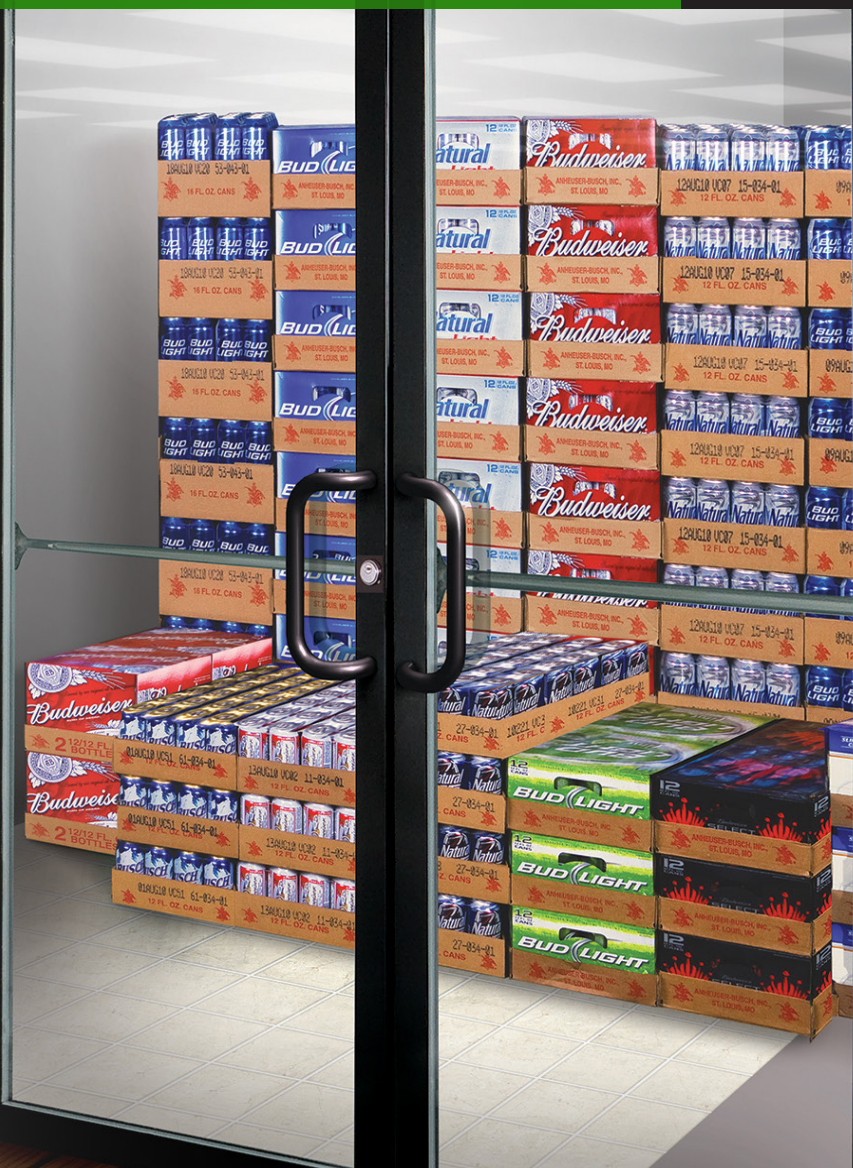
Kodiak® | Super Duty Pass-Thru Door

2017
DOE
COMPLIANT

BEER CAVES

Kodiak beer cave doors are Tough, Versatile and made to last!

Cost-Efficient Ownership and Operation



Anthony's Kodiak doors are the most durable and reliable beer cave doors you can have. If your business requires Pass-Thru doors that can withstand heavy traffic, the harshest of environments and daily abuse, the situation demands you install Kodiak Super Duty.

Kodiak's strong life construction and efficient energy insulation ensure long life and cost-effective operations for one of your most highly tracked areas in the store. Kodiak doors are available in a variety of configurations to fit a wide range of installation.

**HIGH TRAFFIC BEER
CAVE DOORS
ENGINEERED FOR
ABSOLUTE STRENGTH**

 **Anthony®**

BEER CAVES

Kodiak's Pass-Thru cooler doors are easy to install and engineered for high traffic and long life. The robust, durable design can withstand years of use and tough handling by customers. From convenience stores to large retailers, Kodiak doors are the superior choice for your store operations.

Applications:

- Walk-In Coolers
- Beer Caves

Standard Finish Options:

- Black
- Satin Silver

Standard Handle Options:

- Offset Door Handle in Black
- Offset Door Handle in Satin Silver

Standard Features:

- 75°F, 55%RH ambient/35°F Walk-In Anti-Condensate Sweat Protection
- Push Bar
- Self Closing
- Hydraulic Door Closure
- 2-Pane Non-Heated Low-E Glass with Argon Gas
- Industrial Grade Cylinder Lock with Internal Thumb-lock
- Top & Bottom Flush-bolt Locks Standard with Double Doors



Kodiak Electronic Auto Lock



Industrial Grade Cylinder Lock



Hydraulic Closure

Options:

- Kodiak Electronic Auto Lock*
- 10" tall Aluminum Diamond Pattern Kickplate
- Panic Bar with Electronic Lock**

*Kodiak Auto Lock Option comes standard with two Auto lock mechanisms fully integrated per door. Kodiak Auto Lock Option is In addition to Standard Industrial Grade Cylinder Lock.

**Industrial Grade Cylinder Lock Not Included when Panic Bar Selected

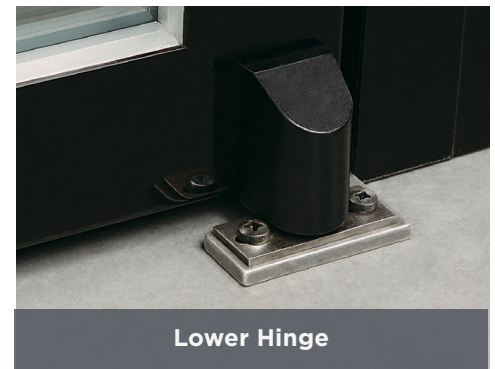
SPECIFICATIONS	SIZE	NET OPENINGS	AMPS (Total)	Energy Consumption (kWh/Day)
SINGLE	32 x 81	37-3/8" x 81"	0.63	1.66
	36 x 81	41" x 81-1/4"	0.66	1.74
	36 x 84	41" x 84-1/4"	0.66	1.74
DOUBLE	36 x 81	77-7/8" x 81-1/4"	1.23	3.25
	36 x 84	77-7/8" x 84-1/4"	1.28	3.38



Top Flushbolt Lock



Integrated Push Bar



Lower Hinge



three ways to order today

go to: www.anthonyinc.com
email: sales@anthonyintl.com
call: 800-772-0900