



## **Optimax 2 LED Lights Ardco Frame Retrofit Installation Instructions**

99-18076-I001



Copyright © 2011 by

ALL rights reserved. Information in this document is subject to change without notice. Companies, names and data used in examples herein are fictitious unless otherwise noted. No part of this document may be reproduced or transmitted in any form or by any means, electronic or mechanical, for any purpose, without express permission of Anthony Manufacturing Co., Inc.

Anthony products identified in this manual are designed and certified to meet  $\text{NFPA 70E}$  for safety, and  $\text{ANSI Z39.1}$  for sanitation standards.

European products meet  $\text{CE}$  requirements.

Each customer is responsible for final site approval.

# TABLE OF CONTENTS

- 1. Retrofit Instructions for Installing Optimax 2 LED Lights on Ardco Frames ..... 4
  - 1.1. Step 1 ..... 4
  - 1.2. Step 2 ..... 4
  - 1.3. Step 3 ..... 4
  - 1.4. Step 4 ..... 4
  - 1.5. Step 5 ..... 5
  - 1.6. Step 6 ..... 5
  - 1.7. Step 7 ..... 6
  - 1.8. Step 8 ..... 6
- 2. Wiring Diagrams ..... 7
  - 2.1. One-Door ..... 7
  - 2.2. Two-Door ..... 8
  - 2.3. Three-Door ..... 9
  - 2.4. Four-Door ..... 10
  - 2.5. Five-Door ..... 11
  - 2.6. Six-Door ..... 12
- 3. Revision History Page ..... 13

## 1. Retrofit Instructions for Installing Optimax 2 LED Lights on Ardco Frames

**NOTE:** All work performed must be done by a qualified electrician. Local and national electrical codes must be followed in the refurbishment of the lighting system.

**NOTE:** Part numbers referenced in the following instructions can be purchased from the Anthony International parts department if they are not available at your location.

### 1.1. Step 1

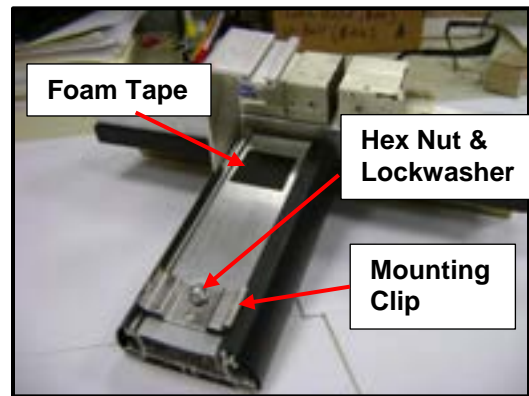
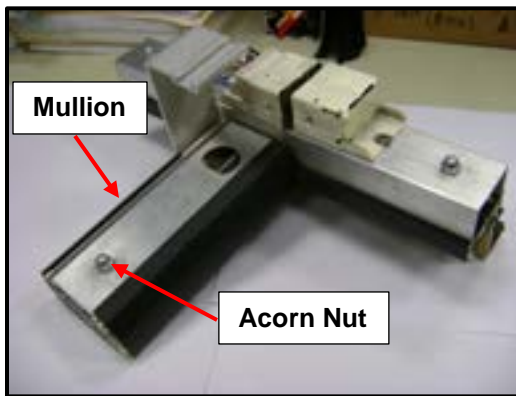
Disconnect the frame from main input power and turn the power switch to off.

### 1.2. Step 2

Remove all of the old lamps and light fixtures from the frame. All hardware including lamp guards, clips and fasteners should be taken off.

### 1.3. Step 3

Remove all acorn nuts along the length of each mullion. Close any holes along the mullions with 1/32" thick foam sealant tape (P/N 70-13705-0001).



### 1.4. Step 4

Install (3) LED mounting clips (P/N 15-16378-0000) onto the lamp side of the mullion with #10-32 hex nuts (P/N 77-12036P018) and lock washers (P/N 78-94884-0001). A clip should be installed near the top, the bottom and at the midpoint of the mullion. **Do not** use the acorn nuts previously removed to fasten the clips.

1.5. Step 5

Install the LED power supply(s) (P/N 60-16851-0002) into a UL approved enclosure(s) (P/N 15-12314-0001) and route the connectors.



Additional hardware to install the power supply and remote enclosure can be supplied by Anthony (P/N 40-12348-1000 #8-32 Zinc Nut; P/N 40-10997-1005 #8-32 X 3/8" Screw; P/N 40-11012-1007 #10 X 1/2" Hex Screw w/Washer).

The red and black wires exiting the enclosure **must** pass through an appropriate UL approved strain relief secured to the enclosure to prevent wire damage. Plug unused holes on the enclosure with an approved cover cap.

1.6. Step 6

Mount the remote enclosure(s) to the top header above the frame.

**NOTE:** Before installing the Optimax II lamp assembly into the clips, make sure the wire leads exiting the lamps are oriented correctly for connection to the power supply(s). The right and left mullions use a lamp fixture marked with "RT" and "LT" respectively. The center mullions use a fixture labeled with "CTR".

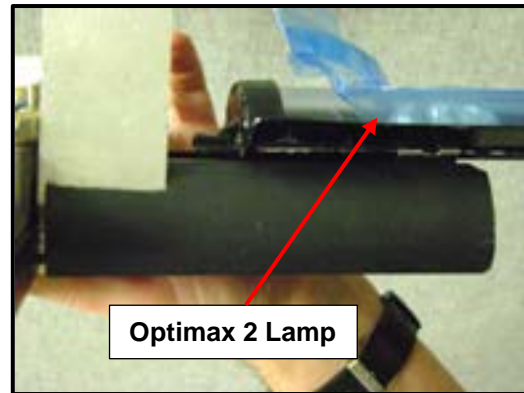
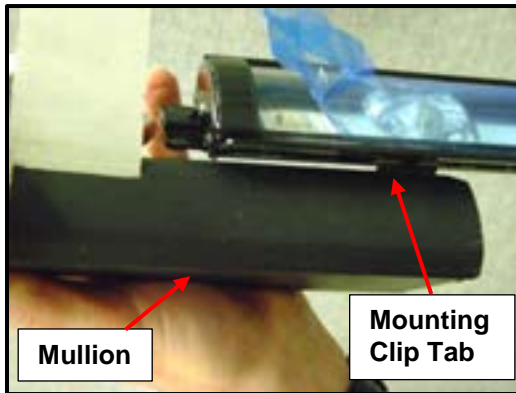
**Optimax II Lamp Assemblies Available from Anthony International**

**NOTE:** Specify the lamp length and color temperature required when ordering lamps.

- P/N 60-16895-0000 Assembly, LED, Center, Optimax 2
- P/N 60-16896-0000 Assembly, LED, Left End, Optimax 2
- P/N 60-16897-0000 Assembly, LED, Right End, Optimax 2

1.7. Step 7

Install the Optimax II LED lamp to the clips on the mullion by bringing the lamp to the mounting clips. Turn the left edge of the lamp inward until the slot on the back of the lamp catches the tab on the left side of each clip. Once all of the tabs are in the slot, rotate the lamp to the right and apply even pressure on the lamp until it locks into the tabs on the right side. Adjust the lamp position until it is centered on the mullion. Fasten the lamp assembly to the mullion with (4) appropriate screw fasteners.

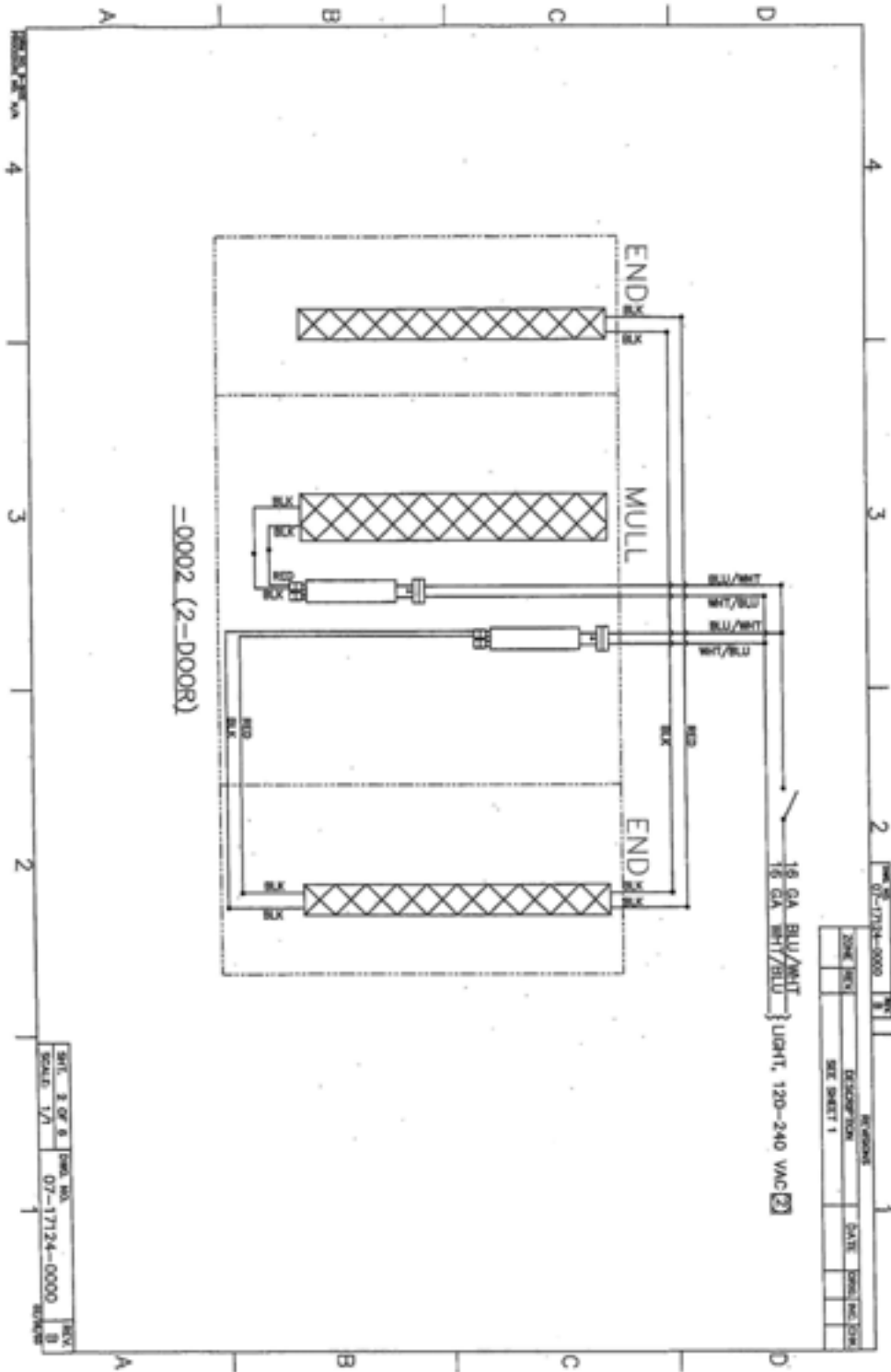


1.8. Step 8

Connect the power supply(s) to the lamp fixture(s) by following the wiring diagram that applies to the frame size. Restore main power to the frame and turn the lamps on at the switch.

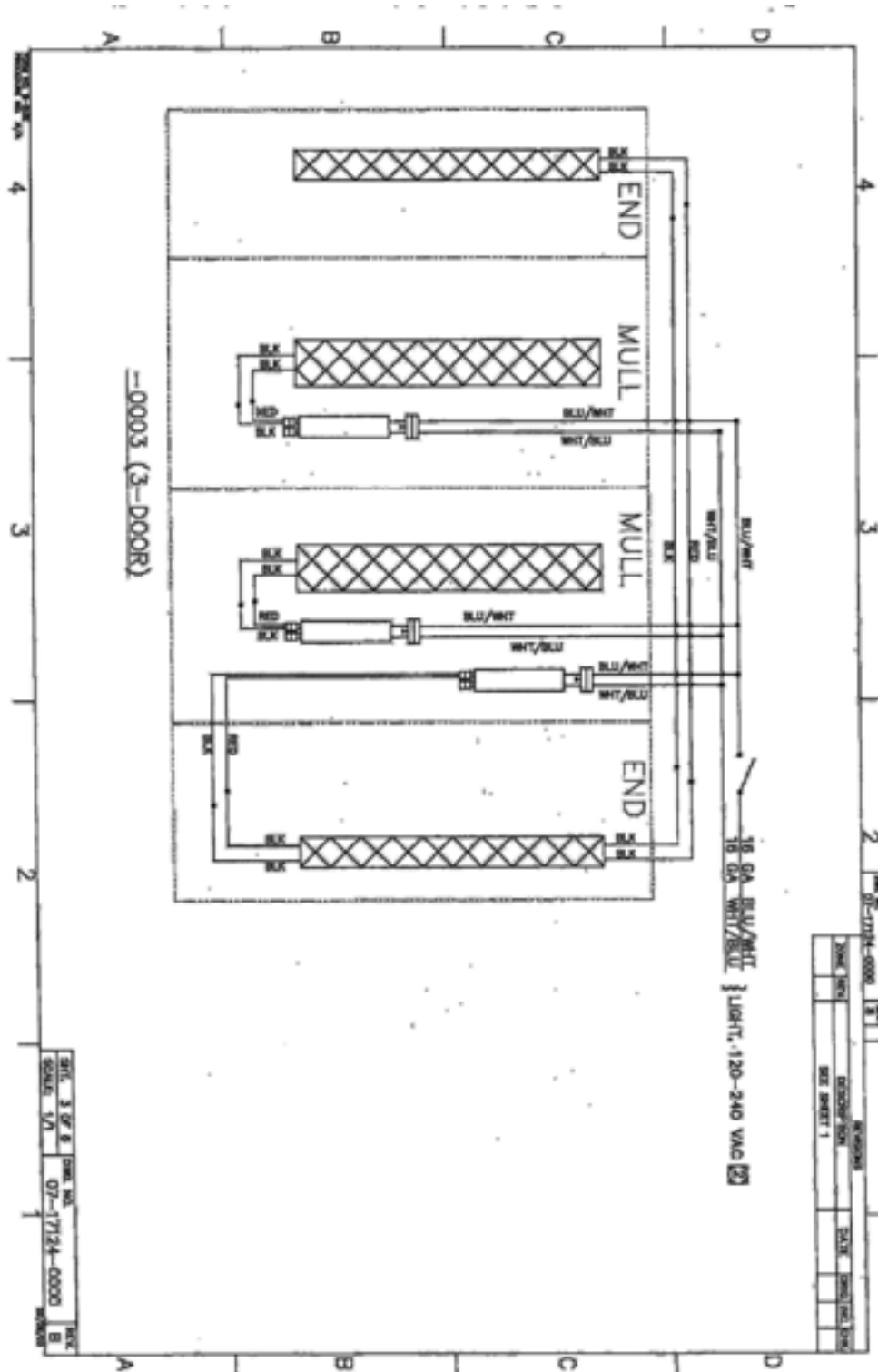


2.2. Two-Door

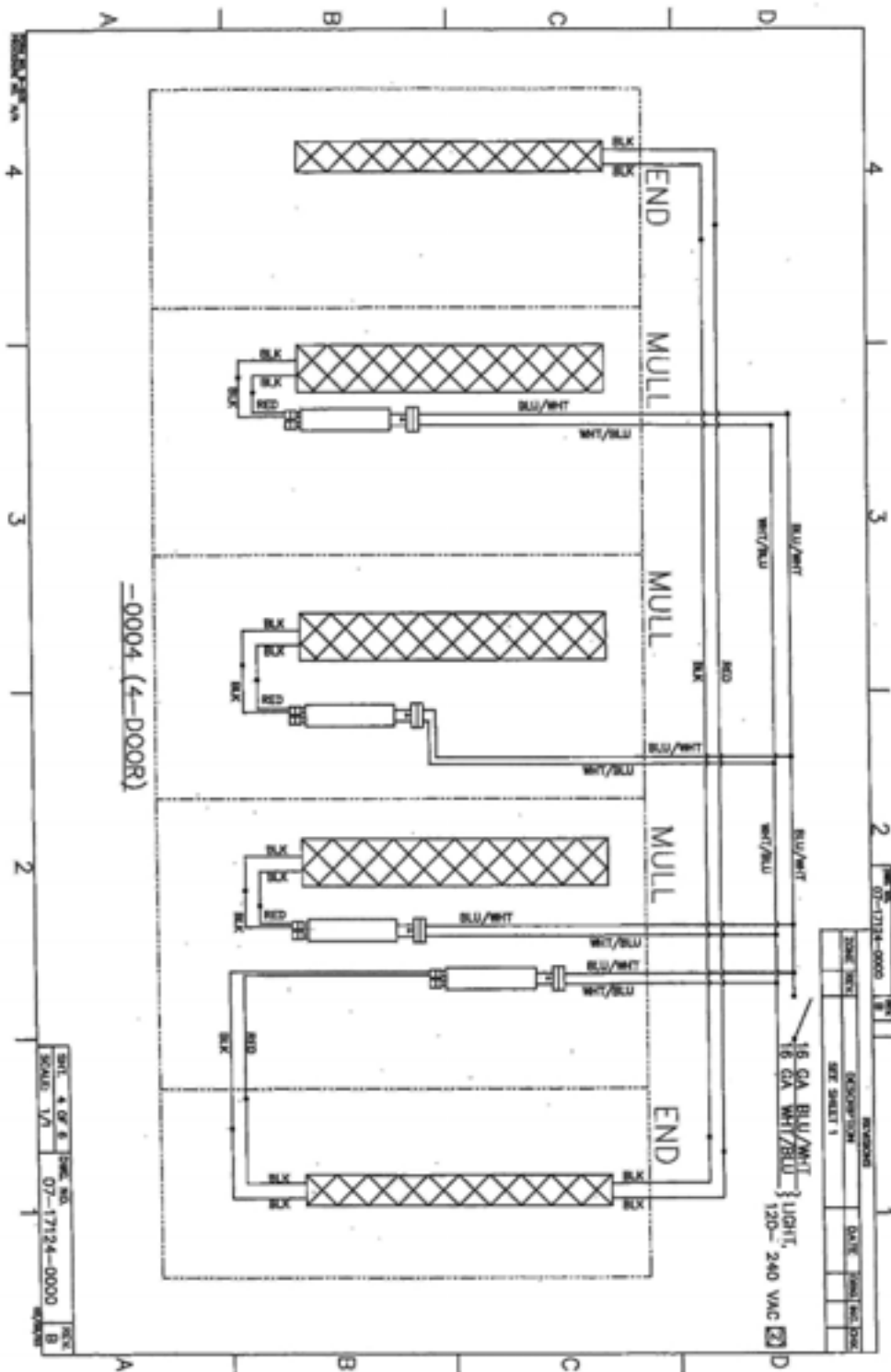




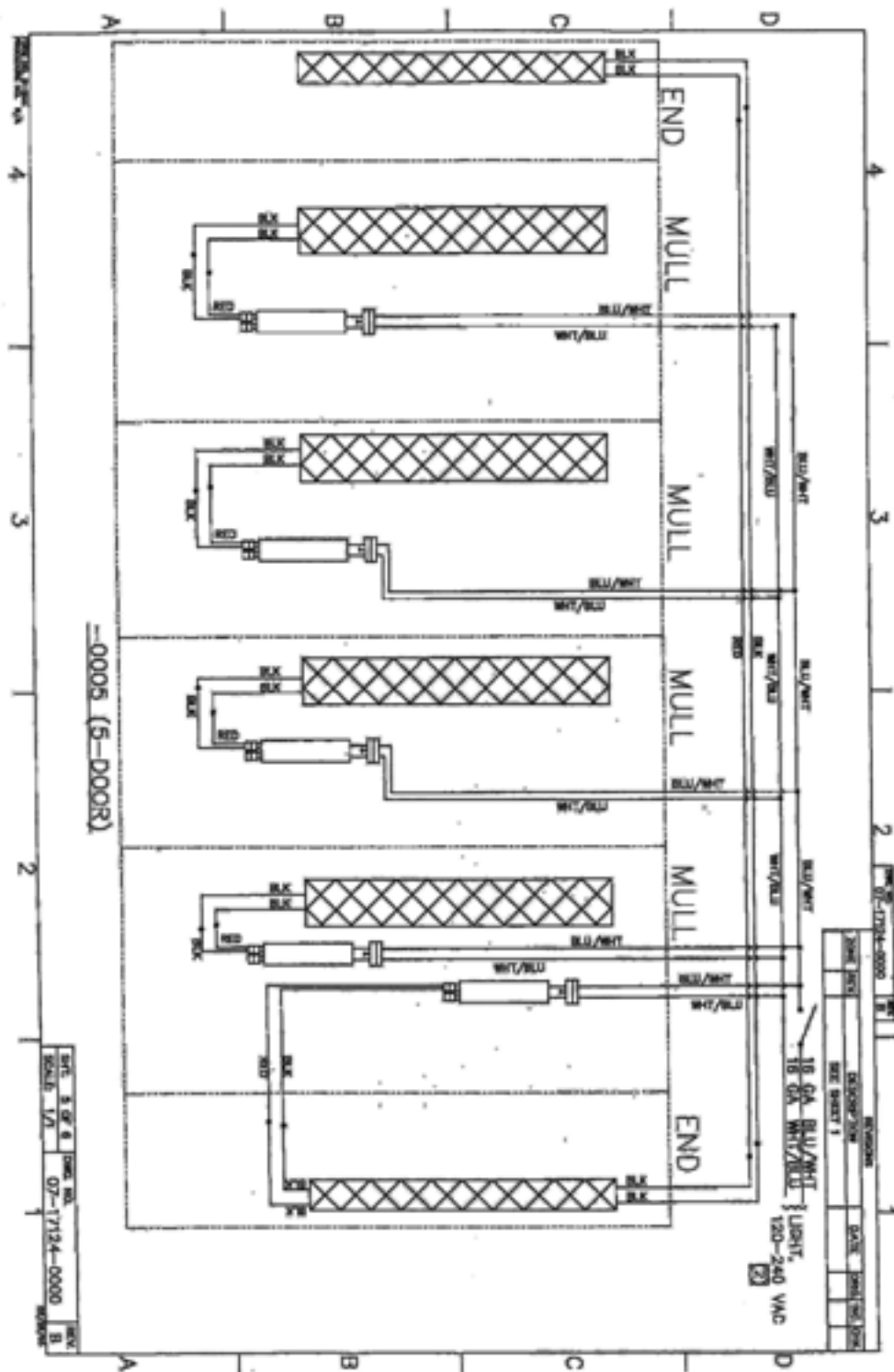
2.3. Three-Door



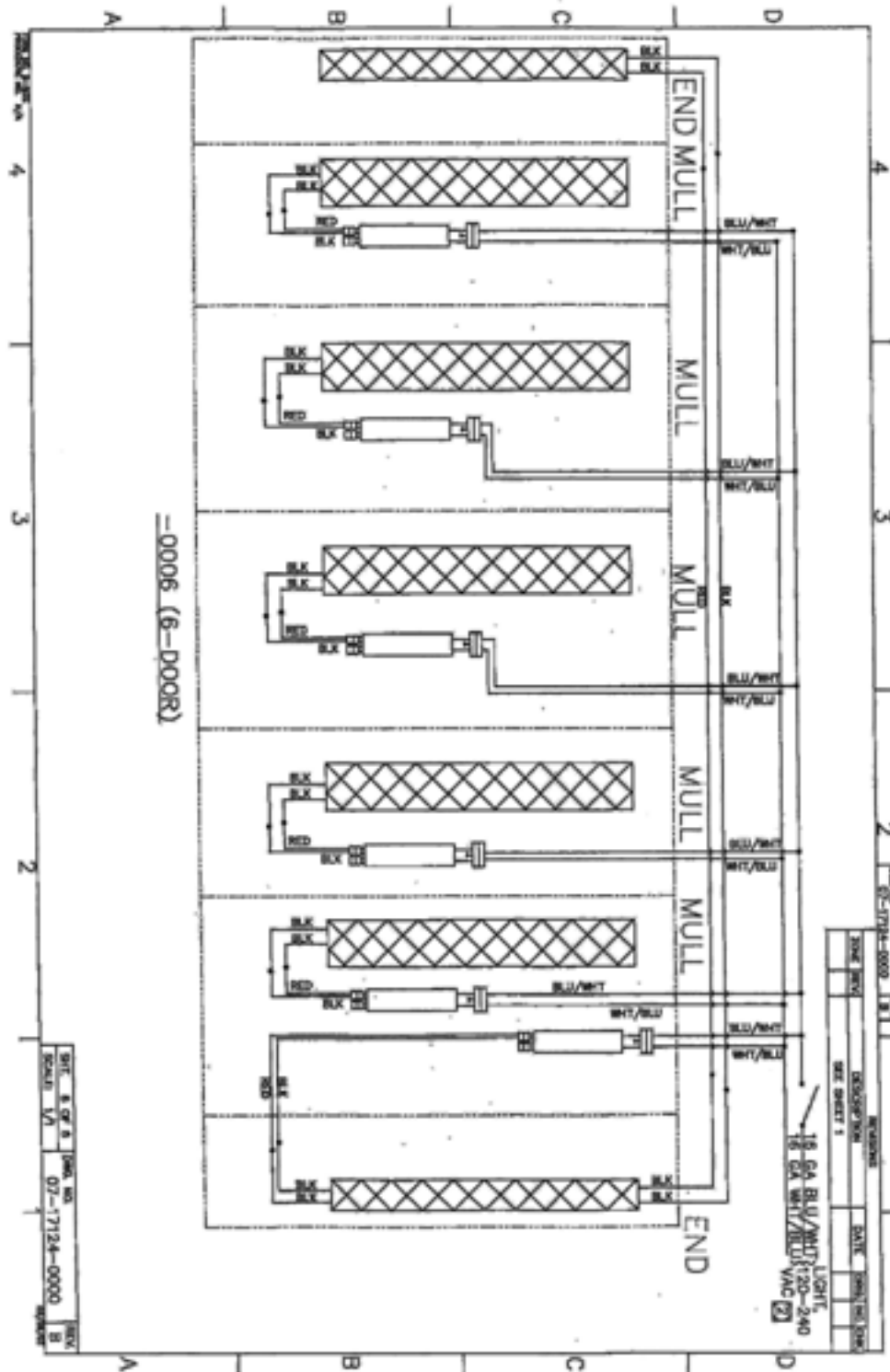
2.4. Four-Door



2.5. Five-Door



2.6. Six-Door



### 3. Revision History Page

REV	ORIGINATOR	DESCRIPTION OF CHANGE	EFFECTIVE DATE
A		Initial Release	12/23/2009
B	S. Fisher	Reformat from PDF to Word and revise art	03/28/2013