



Optimax 2 LED Lighting Installation Instructions

99-17135-I001



Copyright © 2011 by

ALL rights reserved. Information in this document is subject to change without notice. Companies, names and data used in examples herein are fictitious unless otherwise noted. No part of this document may be reproduced or transmitted in any form or by any means, electronic or mechanical, for any purpose, without express permission of Anthony Manufacturing Co., Inc.

Anthony products identified in this manual are designed and certified to meet UL or UL for safety, and UL for sanitation standards.

European products meet CE requirements.








Each customer is responsible for final site approval.

TABLE OF CONTENTS

- 1. Preliminary Considerations..... 4
 - 1.1. Safety 4
- 2. Components 5
 - 2.1. Power Supply 5
 - 2.2. Center Fixture..... 6
 - 2.3. Right End Fixture..... 6
 - 2.3.1. Half Power End..... 7
 - 2.3.2. Full Power End 7
 - 2.4. Left End Fixture 7
 - 2.4.1. Half Power End..... 8
 - 2.4.2. Full Power End 8
- 3. Removing Fluorescent Lighting 8
- 4. Mounting LED Fixtures 9
- 5. Mounting Power Supplies 10
- 6. Wiring Diagrams with Half Power Ends Option..... 12
 - 6.1. One Door (Half) 12
 - 6.2. Two Door (Half) 12
 - 6.3. Three Door (Half)..... 12
 - 6.4. Four Door (Half)..... 13
 - 6.5. Five Door (Half) 13
 - 6.6. Six Door (Half) 13
- 7. Wiring Diagrams with Full Power Ends Option 14
 - 7.1. One Door (Full)..... 14
 - 7.2. Two Door (Full)..... 14
 - 7.3. Three, Four, Five and Six Door Frames (Full) 14
- 8. Revision History Page 15

1. Preliminary Considerations

1.1. Safety

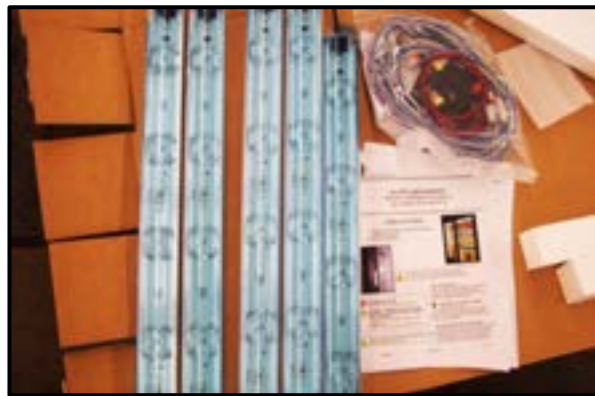
	WARNING – Risk of fire or electric shock. Luminaires wiring, ballasts, or other electrical parts may be damaged when drilling for installation of reflector kit hardware. Check for enclosed wiring and components.
	WARNING – Risk of fire or electric shock. Reflector kit installation requires knowledge of fluorescent lighting luminaires electrical systems. If not qualified, do not attempt installation. Contact a qualified electrician.
	Only those open holes indicated in the photographs and/or drawings may be made or altered as a result of kit installation. Do not leave any other open holes in an enclosure of wiring or electrical components.
	Do not make or alter any open holes in an enclosure of wiring or electrical components during kit installation.
	WARNING – Risk of fire or electric shock. Install this kit only in the luminaires that has the construction features and dimensions shown in the photographs and / or drawings.
	WARNING – To prevent wiring damage or abrasion, do not expose wiring to edges of sheet metal or other sharp objects.
	Installation of this retrofit assembly requires a person familiar with the construction and operation of fluorescent luminaire electrical systems and the hazards involved.



Power Supplies



Wire, Plug Assembly, Connnectors and Seal

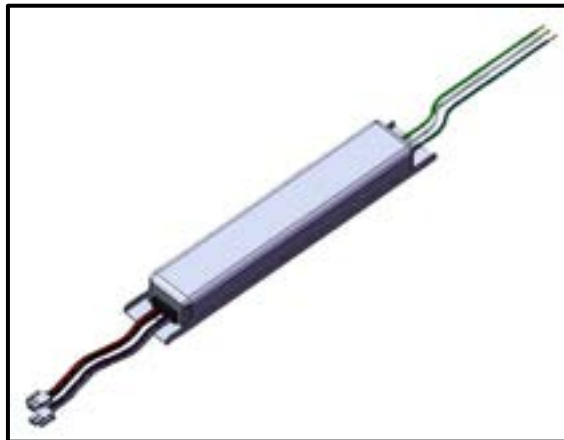


LED Light Fixtures

2. Components

Note: The 101 frame or other frames may require additional parts which can be purchased through the Anthony Service Department.

2.1. Power Supply



Power Supply

Power Supply Part No. 60-16979-0002 – 500mA Low Power
 60-16851-0002 – 700mA High Power

2.2. Center Fixture



Center Fixture

Center Fixture Part No.	60-17447-0001 – 60" 4100K
	60-17447-0002 – 72" 4100K
	60-17447-0003 – 48" 4100K
	60-17447-1001 – 60" 5000K
	60-17447-1002 – 72" 5000K
	60-17447-1003 – 48" 5000K
	60-17447-2001 – 60" 3500K
	60-17447-2002 – 72" 3500K
	60-17447-2003 – 48" 3500K

2.3. Right End Fixture



Right End Fixture

2.3.1. Half Power End

Right End Fixture Part No.	60-17445-0001 – 60" 4100K
	60-17445-0002 – 72" 4100K
	60-17445-0003 – 48" 4100K
	60-17445-1001 – 60" 5000K
	60-17445-1002 – 72" 5000K
	60-17445-1003 – 48" 5000K
	60-17445-2001 – 60" 3500K
	60-17445-2002 – 72" 3500K
	60-17445-2003 – 48" 3500K

2.3.2. Full Power End

Right End Fixture Part No.	60-17554-0001 – 60" 4100K
	60-17554-0002 – 72" 4100K
	60-17554-0003 – 48" 4100K
	60-17554-1001 – 60" 5000K
	60-17554-1002 – 72" 5000K
	60-17554-1003 – 48" 5000K
	60-17554-2001 – 60" 3500K
	60-17554-2002 – 72" 3500K
	60-17554-2003 – 48" 3500K

2.4. Left End Fixture



Left End Fixture

2.4.1. Half Power End

Left End Fixture Part No.	60-17446-0001 – 60” 4100K
	60-17446-0002 – 72” 4100K
	60-17446-0003 – 48” 4100K
	60-17446-1001 – 60” 5000K
	60-17446-1002 – 72” 5000K
	60-17446-1003 – 48” 5000K
	60-17446-2001 – 60” 3500K
	60-17446-2002 – 72” 3500K
	60-17446-2003 – 48” 3500K

2.4.2. Full Power End

Left End Fixture Part No.	60-17553-0001 – 60” 4100K
	60-17553-0002 – 72” 4100K
	60-17553-0003 – 48” 4100K
	60-17553-1001 – 60” 5000K
	60-17553-1002 – 72” 5000K
	60-17553-1003 – 48” 5000K
	60-17553-2001 – 60” 3500K
	60-17553-2002 – 72” 3500K
	60-17553-2003 – 48” 3500K

3. Removing Fluorescent Lighting



BEFORE YOU BEGIN
Read instructions completely and carefully.



WARNING: TO REDUCE THE RISK OF FIRE, ELECTRICAL SHOCK OR INJURY, OBSERVE THE FOLLOWING:

- 1) Use this unit in the manner intended by the manufacturer.
- 2) Before servicing or altering, switch power off.



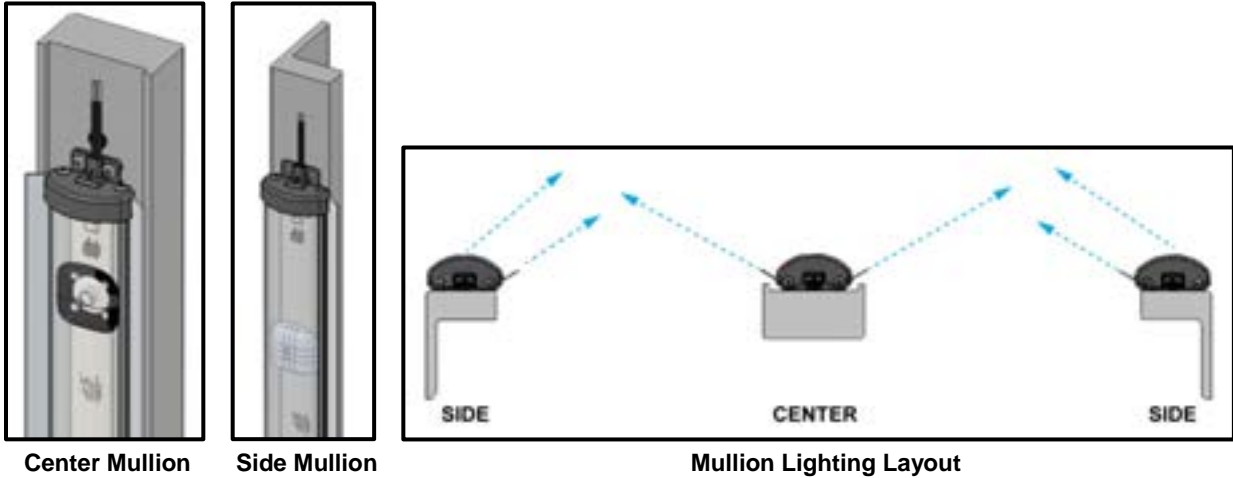
Turn power off before removing existing lighting system and follow appropriate lock out/tag out safety procedures.


- Remove lenses, fluorescent lamps. Lamp holders, mounting clips and ballasts from existing lighting system.

Note: Remove and dispose of existing ballasts per any local or Federal guidelines.

Note: Refer to case manufacturer’s instructions for any questions on removing the fluorescent system and ballast.

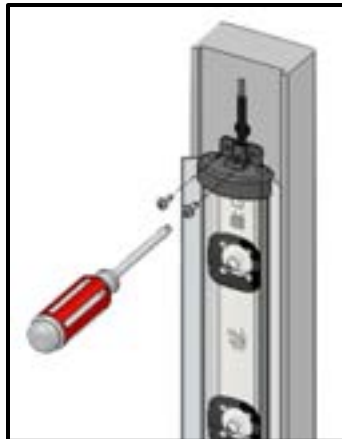
- Place the light fixture against the mounting surface. Using the light fixture as a template, mark the center of the holes to be drilled. Use a 1/8” dia. Drill bit and drill holes where marked (4 places).



	<p>Prior to drilling make sure that there are no existing components inside the mullion in the areas marked off for the designated holes.</p>
---	---

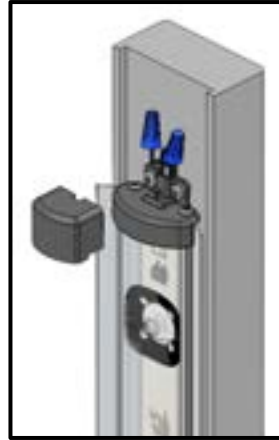
4. Mounting LED Fixtures

1. Use a Philips screwdriver to start threading #8 tapping screws (supplied).

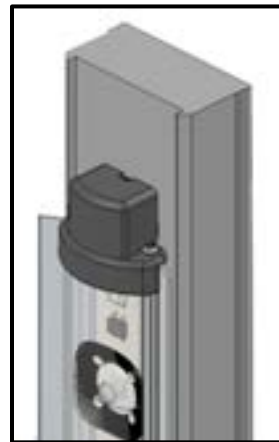


2. Make sure wires are not caught between light fixture and mounting surface.
3. Peel off tape liner from the back of the fixture prior to installation.

4. Connect wires from the fixture to the black & red wires from the 2-conductor harness (supplied) using Wago Wall nut connector part # 773-162 or other approved connectors.



5. End fixtures need to be connected together see wiring diagrams.
6. Tuck wire connectors underneath wire cover before snapping it to the end cap, make sure wire cover is locked into the end cap.

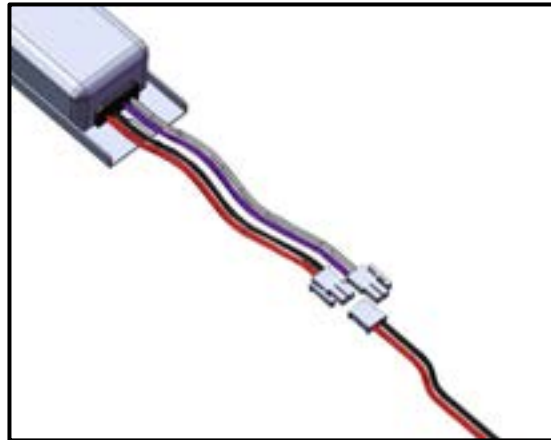


7. Remove protective film from lens.
8. Seal off the cutouts in the Mullions using insulating material.

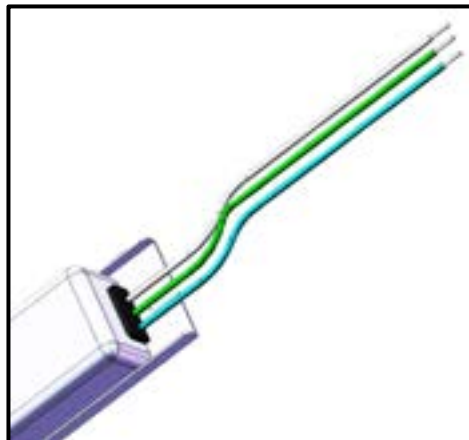
5. Mounting Power Supplies

1. Install the power supply in the same location where ballast was fitted or in a general location for ease of wire connection using #8 tapping screws (2 places).
2. Attach ground wire to frame mounting surface.

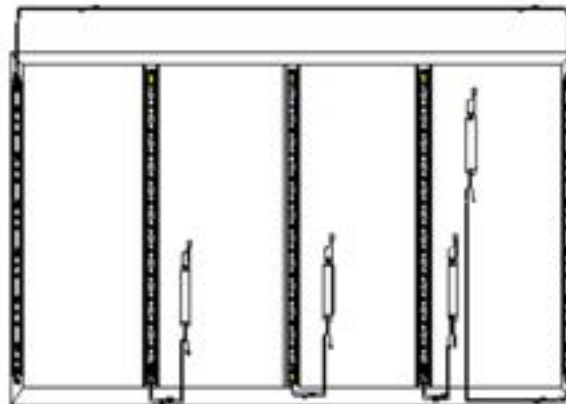
3. Connect light wires to driver using wire assembly (supplied).



4. The remaining purple and gray wires from the output side of the power supply control the dimming feature.
5. Connect blue (+) and white/blue (-) from the input side of the power supply to the original load and neutral wires from the frame using Wago Wall nut connector part # 773-162 or other approved connector.



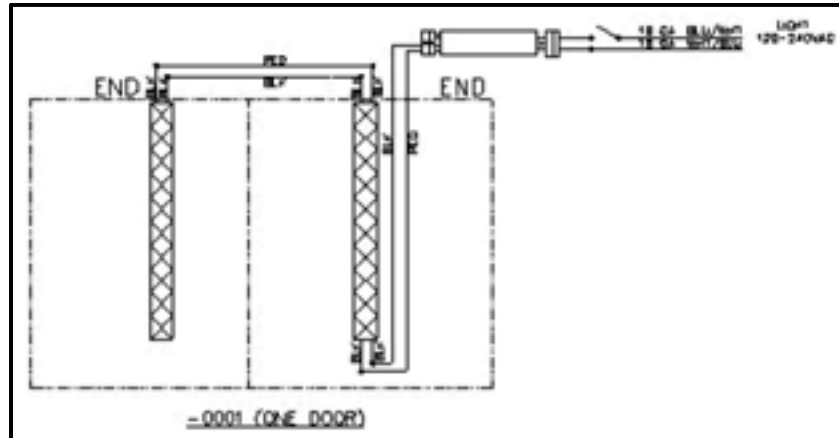
Typical Installation (4-Dr Frame Half Power Ends Shown Below)



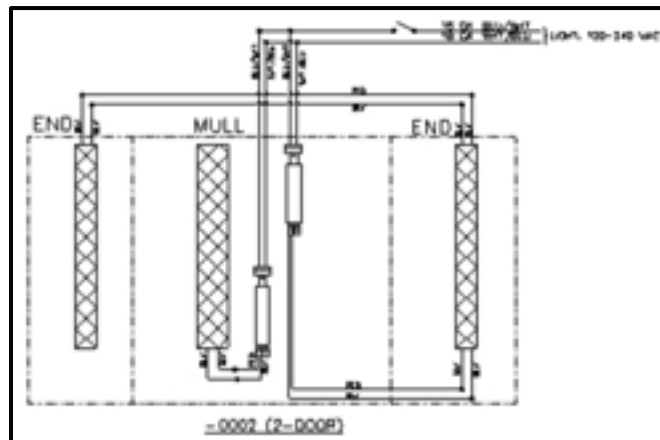
View from the Inside of the Case

6. Wiring Diagrams with Half Power Ends Option

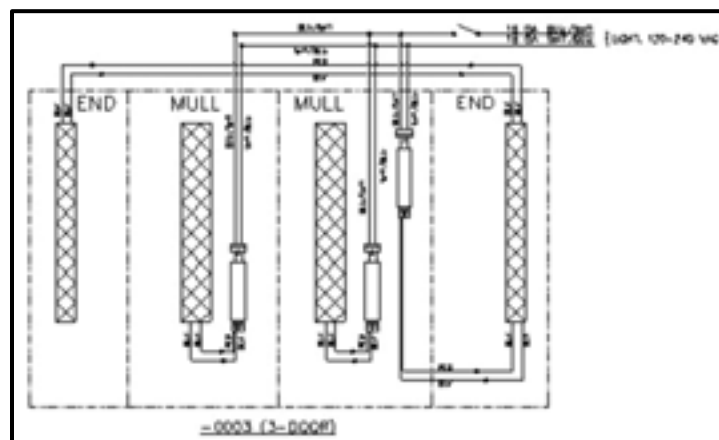
6.1. One Door (Half)



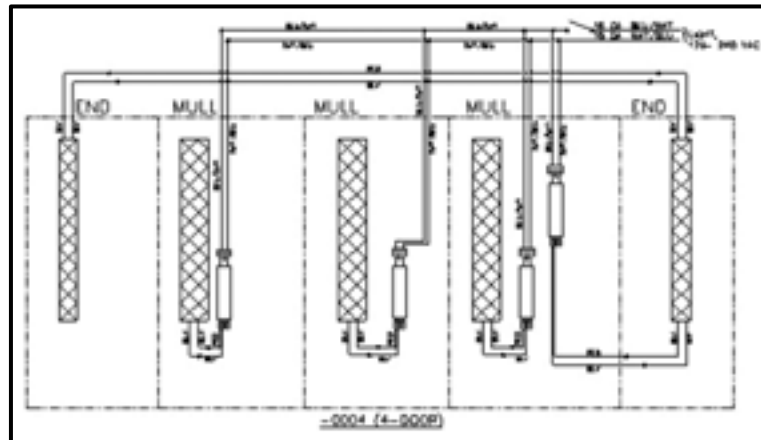
6.2. Two Door (Half)



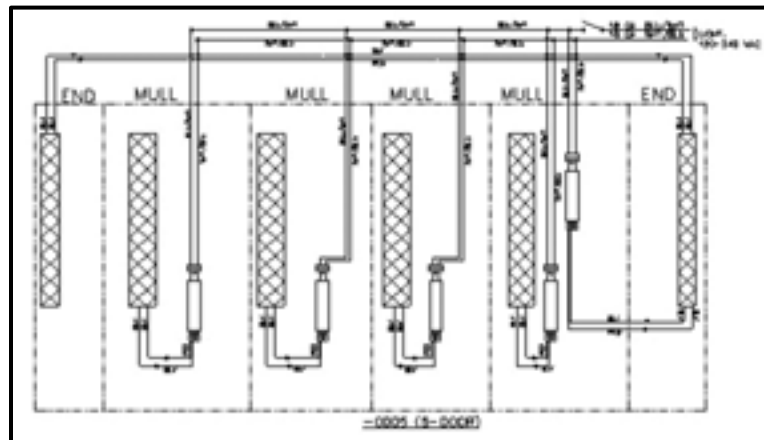
6.3. Three Door (Half)



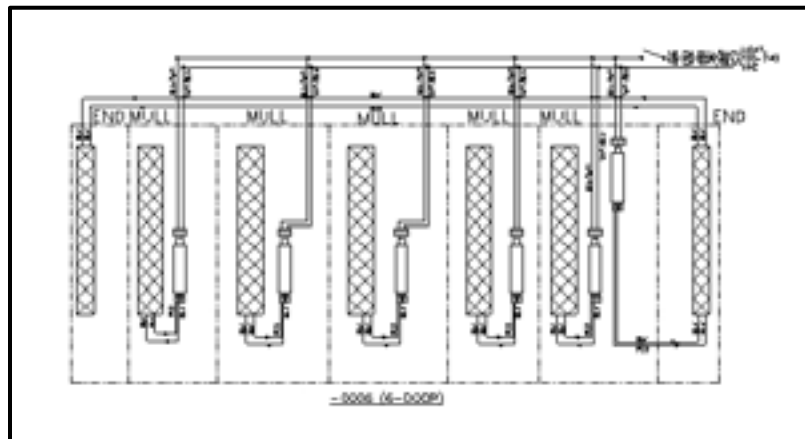
6.4. Four Door (Half)



6.5. Five Door (Half)

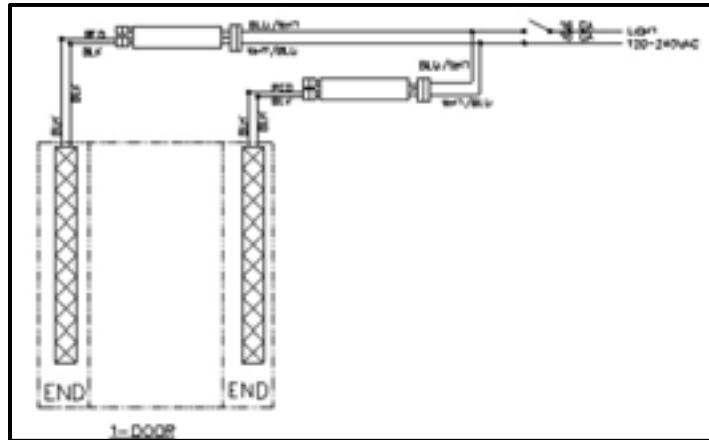


6.6. Six Door (Half)

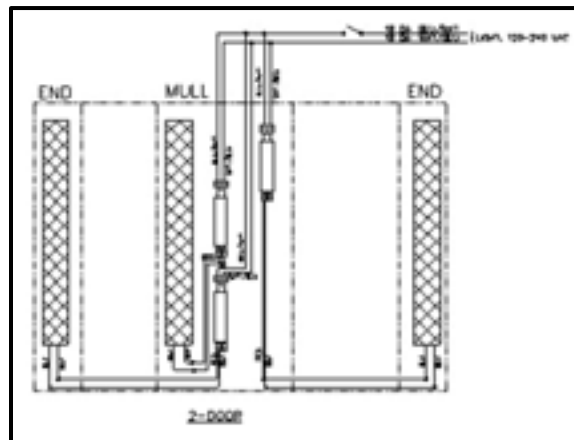


7. Wiring Diagrams with Full Power Ends Option

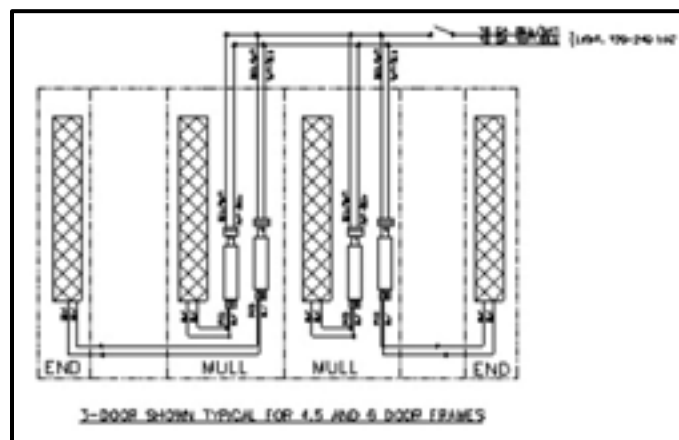
7.1. One Door (Full)



7.2. Two Door (Full)



7.3. Three, Four, Five and Six Door Frames (Full)



8. REVISION HISTORY PAGE

REV	ORIGINATOR	DESCRIPTION OF CHANGE	EFFECTIVE DATE
A		Initial Release	08/21/2008
B		Changes made	03/18/2009
C		Changes made	08/03/2009
D		Changes made	10/26/2009
E		Changes made	11/26/2012
F	S. Fisher	Reformat from Framemaker to Word	03/26/2013